
DTN ProphetX iOS Mobile App User Guide

iPhone iPad

Updated March, 2017

Life Is On | Schneider Electric



DTN ProphetX iOS Mobile App

Make your most profitable trading decisions away from your desk with our new high-performance app, providing access to DTN ProphetX's powerful intelligence and tools on your iOS device.

Now, anytime, anywhere, you can monitor and manage the markets using the power of DTN ProphetX. With the new DTN ProphetX app for iOS, you can access a broad range of real-time market and benchmark data – including quotes, charts, and news – in an easy-to-use, mobile environment.

- Quick dashboard display
- Personalized quote list
- Extensive charting
- Broad range of market coverage
- Unique, unbiased insights



All new!

- *Charts and News are now available on the iPhone*
- *Intermarket and user-defined spreads can now be entered on the iPhone and iPad*
- *Performance of streaming market data has been enhanced*

Table of Contents

ProphetX iOS Mobile App User Guide

A. App Compatibility Requirements	4
B. How to Install & Update App	5
C. iPhone and iPad App Layouts	6-7
D. Login & Main Menu	8-11
E. iCloud Storage	12-13
F. Quotes (including spreads)	14-22
G. Charts	23-28
H. News	29-32
I. Customer Service	33

NOTE: This user guide primarily refers to the ProphetX iPhone app to describe features, functionality, and instructions. The minor differences within the iPad app have been captured throughout this guide.

A. App Compatibility – Device & OS

The ProphetX iOS mobile app for the iPhone and iPad has the following device and operating system compatibility requirements:

	Device	OS
iPhone	5S or higher	Version 9 or higher
iPad	iPad 3 or higher	

B. Find the ProphetX App on the App Store

The steps to install or update the ProphetX iOS mobile app are:

New App Installation



App Update



C. App Layout | ProphetX iOS for iPhone

Quotes



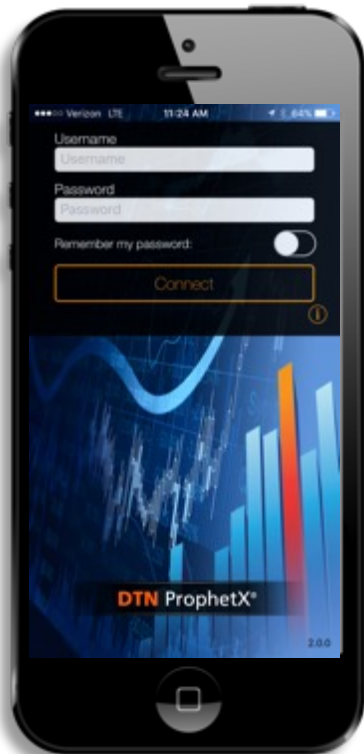
Charts



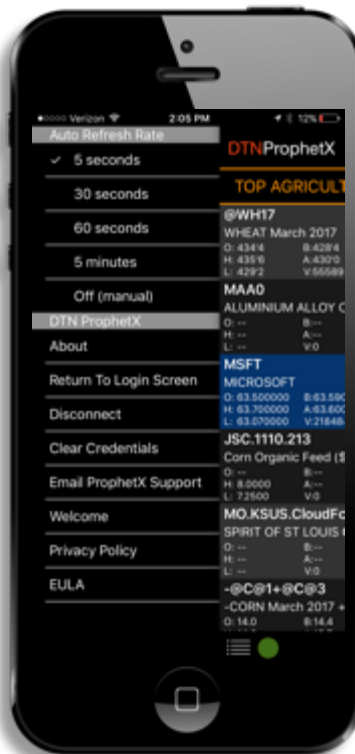
News



Login



Main Menu



D. App Layout | ProphetX iOS for Apple iPad

Quotes

News



Charts

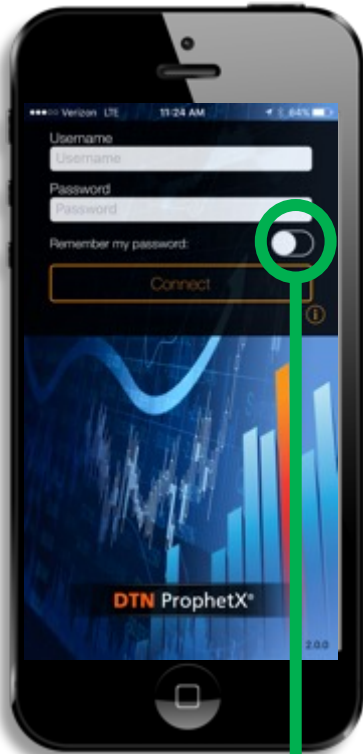
Login

Main Menu



E. Login & Main Menu

Login & Password | "Remember My Password"



- After installing the ProphetX iOS app on your device, you may login to the app using the identical username and password you use for the ProphetX desktop application.
- To avoid being required to enter a username and password each time you access the ProphetX iOS app, you may choose to allow the app to remember your password.
- The slider for remembering your password is located immediately below the password field. When this slider is selected (green), the app will automatically launch without requiring you to reenter your login and password.

(No) Remember my password:

OR

(Yes) Remember my password:

- This setting can be changed at any time by returning to the login screen via the main menu.

E. Login & Main Menu

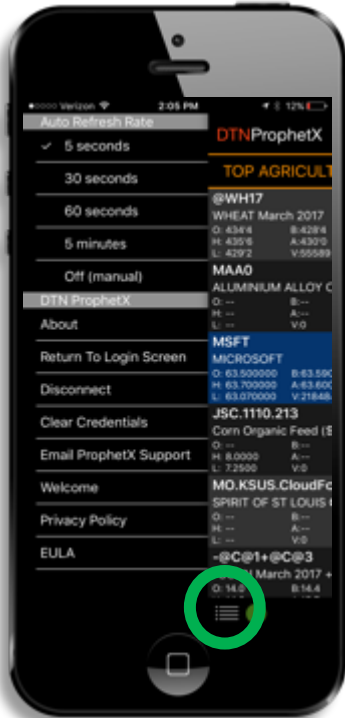
Staying Connected | Main Menu



- Once logged in, your quote list will be displayed and a green circle at the bottom left of the page will be displayed (or top left corner on iPad). The green circle indicates you are “connected” to the app while red would indicate you are “disconnected” from the app.

Connected = 

Disconnected = 



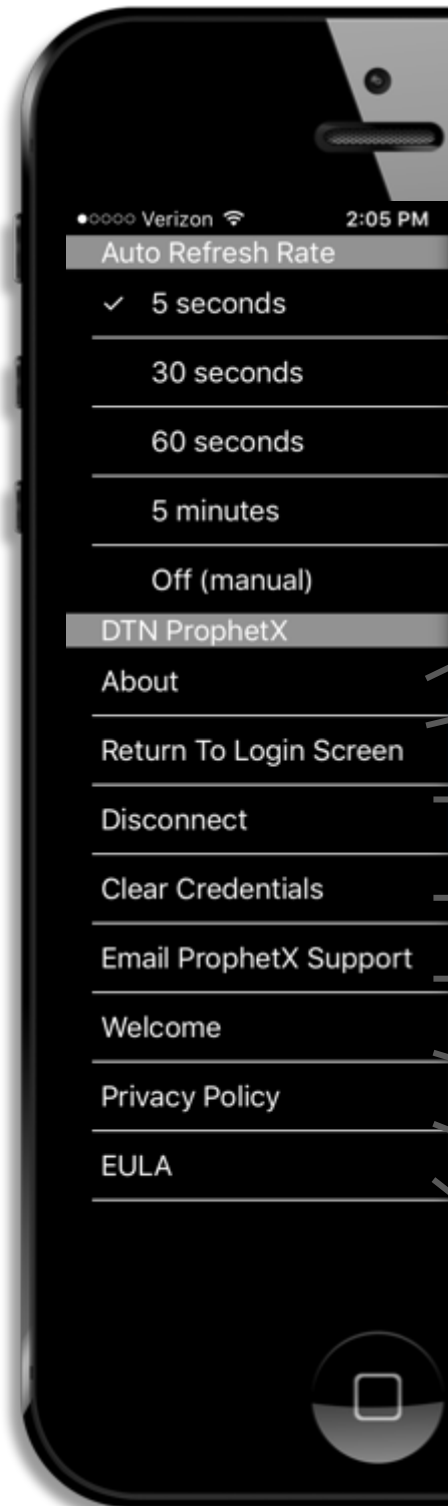
- To access the app’s main menu, you may select the details icon in the bottom left corner of the page. This icon has several bulleted white lines and is enlarged below.



- Selecting this icon slides the quote list to the right and displays the menu.

E. Login & Main Menu (iPhone)

Main Menu



The app's main menu provides you with basic information about the app and provides you with a number of elementary features.

Allows you to select the rate at which you prefer to have your quote list's symbol pricing information updated during market hours

Displays app description and version #

Returns you to login screen

Allows you to "Connect," "Disconnect" based on your connectivity status

Will clear your username and password

Creates email template to ProphetX Customer Service

Provides basic user guide for the app

DTN's privacy policy and terms of use

End User License Agreement

E. Login & Main Menu (iPad)

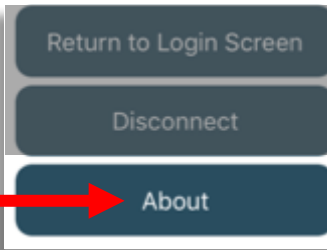
Main Menu

The iPad app's main menu is set up differently compared to the iPhone app's main menu, but contains the same features and material.



Allows you to select the rate at which you prefer to have your quote list's symbol information updated during market hours

Returns you to login screen, allows you to "Connect" or "Disconnect" based on your connectivity status, and provides access to "About"



Within "About":

Welcome: Provides a basic user guide for the app

Privacy Policy: DTN's privacy policy and terms of use

EULA: End User License Agreement

Clear Credentials: Will clear your username and password

Email ProphetX Support: Creates email template to ProphetX Customer Service

App Version

2.0.0(1099) - 2216744d

F. iCloud

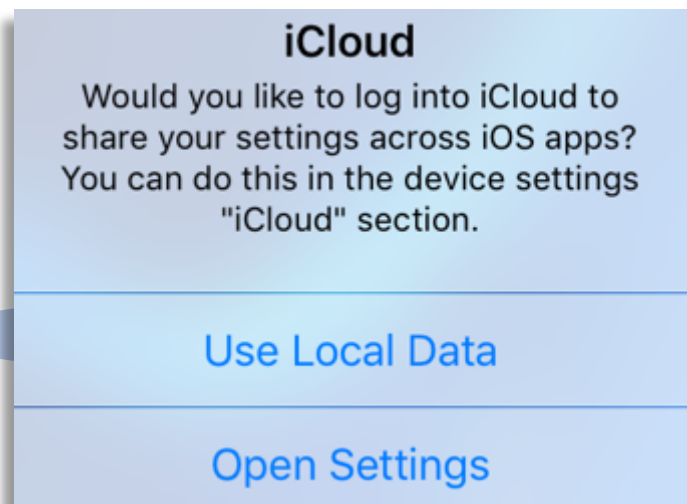
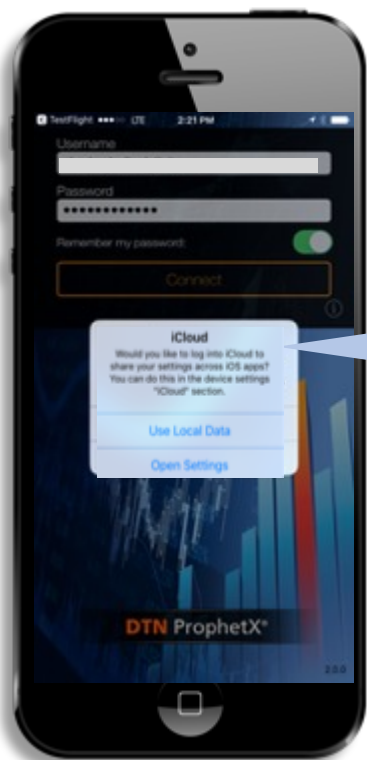
iCloud Storage

Note: The steps to select local data or iCloud are identical for the iPhone and iPad.

If you would like the ProphetX quote list and news search listing on your iPhone to be synchronized with the ProphetX quote list and news search listing on your iPad, linking your iCloud account to your ProphetX app is the way to do so.

The only alternative storage option would be to use your iPhone for storage (*“local data”* or *“local to your device”*).

Upon logging in to the app for the 1st time on your iPhone, the following message will be displayed to guide you through the process:



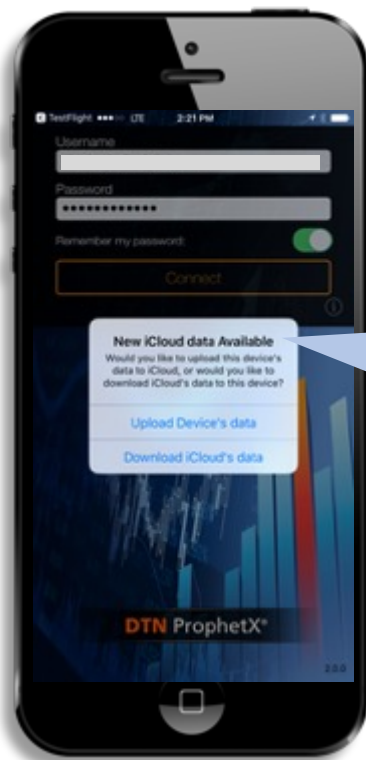
- You may “Open Settings” to set up the connection between your ProphetX iOS app and your iCloud account.

F. iCloud

iCloud Storage

Note: The steps to select local data or iCloud are identical for the iPhone and iPad.

In the event that you have already connected the ProphetX iOS app to your iCloud account on your iPad and you are logging in to the iPhone app for the first time, you will receive the following message to guide you through the process:



New iCloud data Available
Would you like to upload this device's data to iCloud, or would you like to download iCloud's data to this device?

Upload Device's data

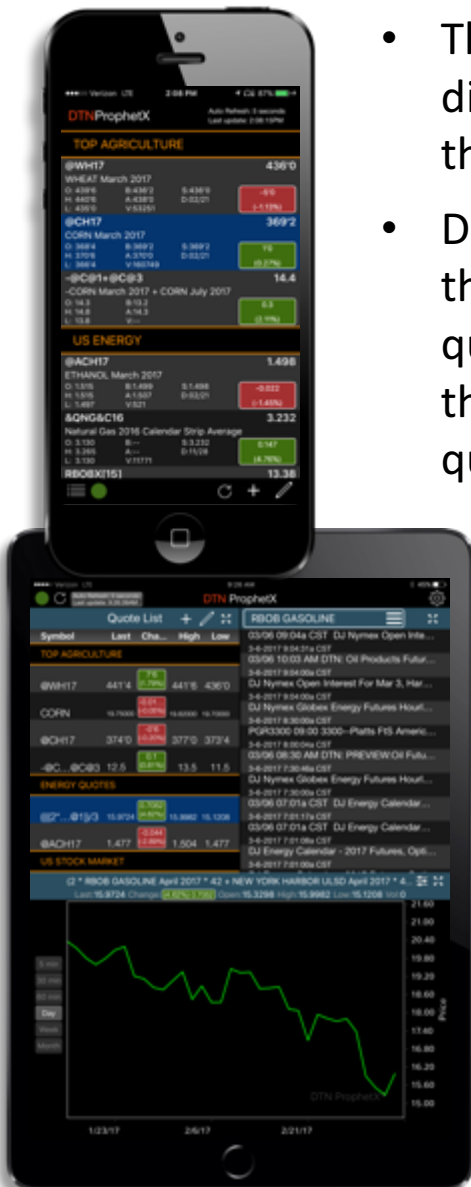
Download iCloud's data

- You may choose to upload your iPhone's data to the iCloud or download iCloud data to your iPhone.

G. Quotes

Quote List Basics

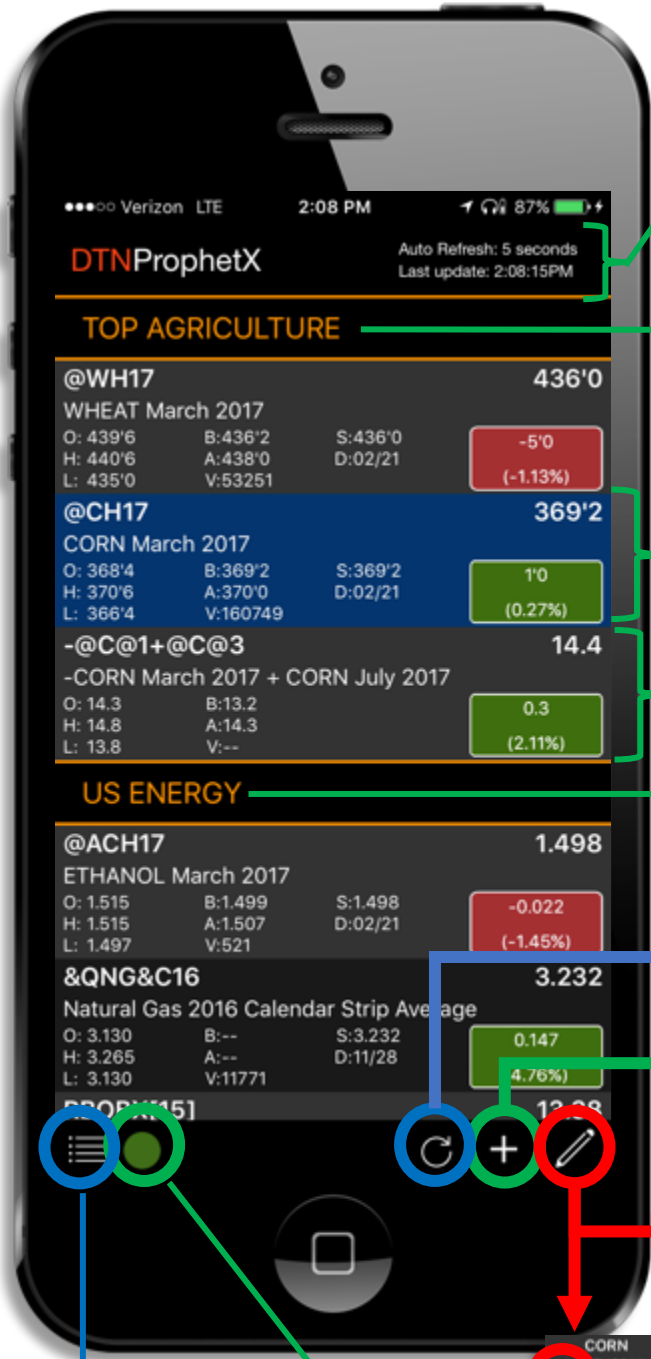
The Quote List page is the “hub” of the ProphetX iOS app on the iPhone. On the ProphetX iOS iPad app however, the “hub” is a page that displays quotes, news, and charts together. The data and content associated with charts and news delivered is based directly on the individual symbol or spread selected or highlighted within your quote list.



- The quote list will be the first page displayed to you upon logging in to the ProphetX iOS app.
- Depending on your choice for storage, the quote list will display a listing of quotes stored locally on your iPhone OR the quote list will display a listing of quotes stored using iCloud.
- You are allowed to store a maximum of 100 symbols, spreads, and/or labels in your quote list.
- You may remove symbols and spreads directly from the quote list by selecting the pencil icon or by sliding an individual symbol line item to the left. You may add symbols, spreads, and labels by selecting the “+” icon.

G. Quotes

Quote List Layout



Auto Refresh frequency & most recent market update time stamp

User-defined label for grouping a set of symbol quotes

Individual symbol quote data (see pg. 21 for additional detail)

Intermarket spread data

User-defined label for grouping a set of symbol quotes

Icon to select to refresh quote list

Icon to select to add symbol, spread, or label

Icon to select to reorder or remove symbols, spreads, and labels

Icon to access Main Menu

App Connectivity Status

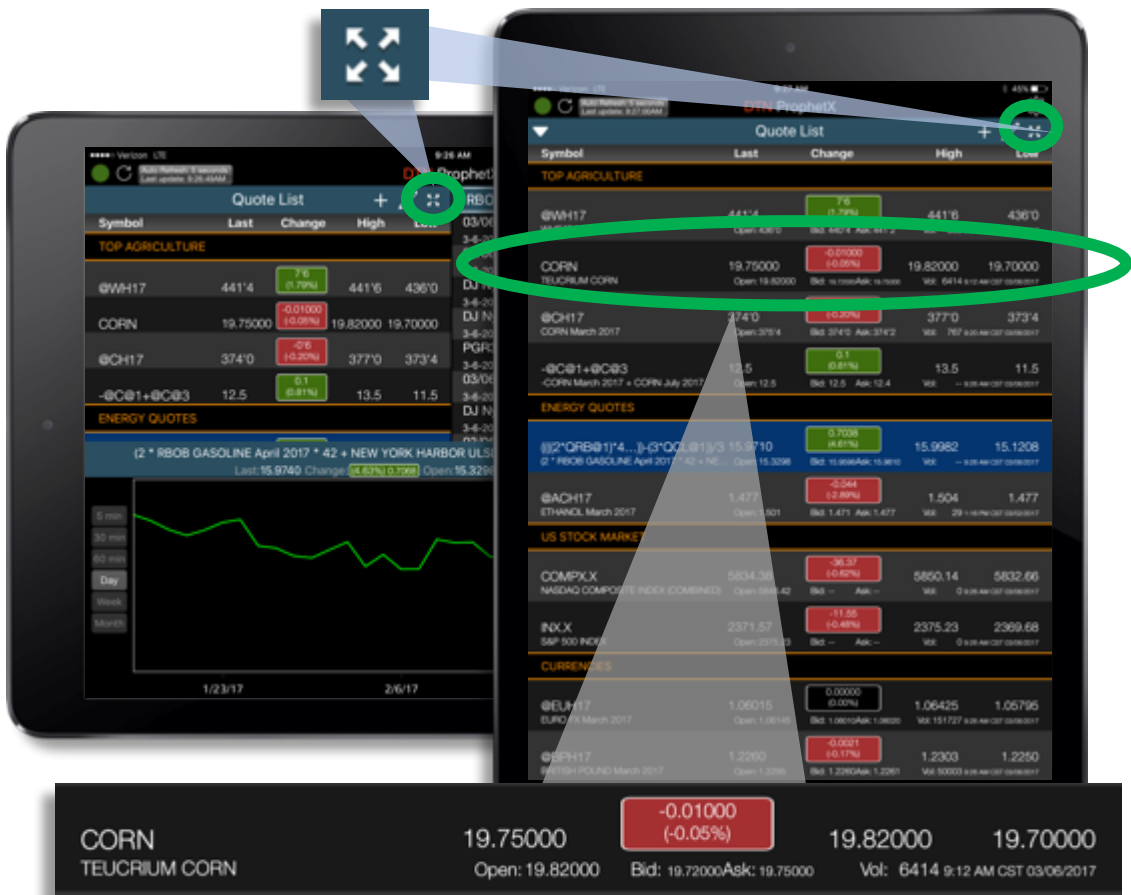
Press and hold this icon to reorder the symbol, spread, or label above or below others

G. Quotes (iPad)

Quote List – Expand/Collapse

On the ProphetX iOS iPad app, there are 2 features that differentiate its quote list from the iPhone app's quote list.

1. With more space available on iPad, an expand/ collapse icon is available to expand the quote list to full screen or to collapse the quote list back to its normal size.



2. To access and view “Ask,” “Bid,” or “Volume” data on the iPad, you must expand the quote list to full screen. “Last,” “Change,” “High,” and “Low” are the only data points contained within the quote list when it is collapsed.

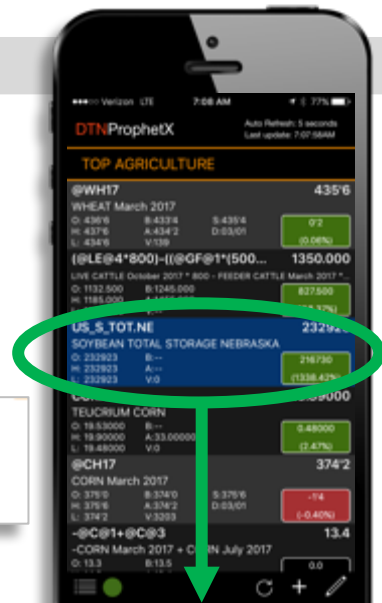
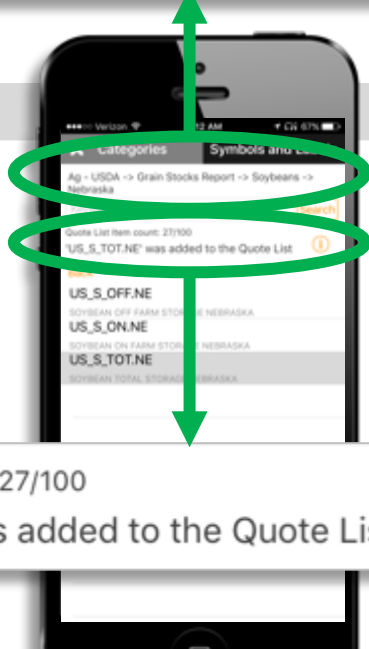
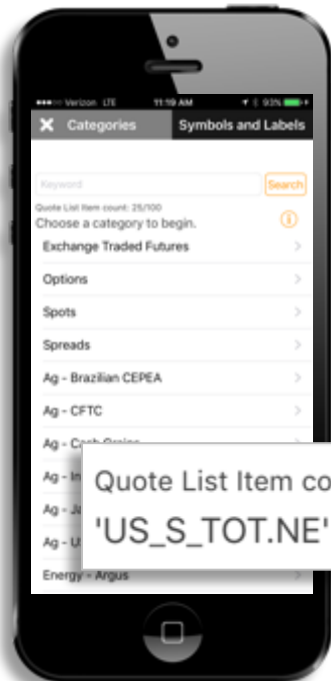
G. Quotes

Creating Your Quote List & Symbol Search



To build your quote list in the ProphetX iOS app, select the “+” icon in the bottom right hand of the quote list page.

- You will be directed to the “Categories” page to search for your desired symbols.
- You may search for a symbol by entering a keyword OR by drilling down into a category. You may add a symbol to your quote list by simply tapping on the symbol you have located.



Quote List Item count: 27/100
'US_S_TOT.NE' was added to the Quote List

*Soybean Total Storage
Nebraska Added
to Quote List*

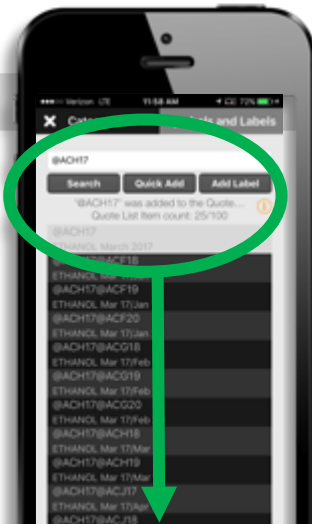
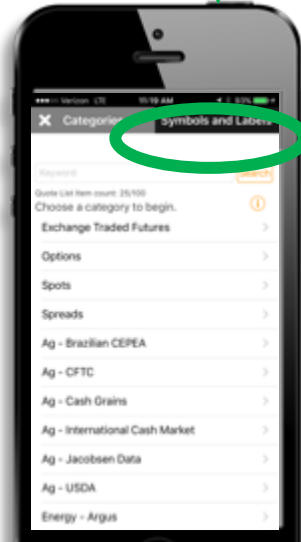
US_S_TOT.NE	232923
SOYBEAN TOTAL STORAGE NEBRASKA	
O: 232923	B:--
H: 232923	A:--
L: 232923	V:0
	216730
	(1338.42%)

G. Quotes

Creating Your Quote List & Symbol Search

Alternatively, if you are familiar with the exact symbol you would like to add, you can find it by entering the symbol on the “**Symbols and Labels**” page.

- For example, by entering the symbol for Ethanol (@ACH17) in the search field and selecting “**Search**”, Ethanol is returned as the top result. (“**Quick Add**” can also be selected without a search.)
- You may simply tap the symbol OR select “**Quick Add**” to have the symbol added to your Quote List.



'@ACH17' was added to the Quote...
Quote List Item count: 25/100

@ACH17		1.510	
ETHANOL March 2017			
O: 1.504	B: 1.501	S: 1.504	0.006
H: 1.511	A: 1.508	D: 02/24	(0.40%)
L: 1.497	V: 342		

Ethanol Added to Quote List

G. Quotes

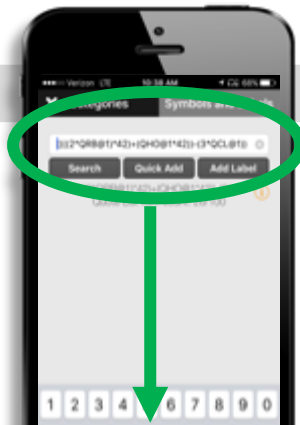
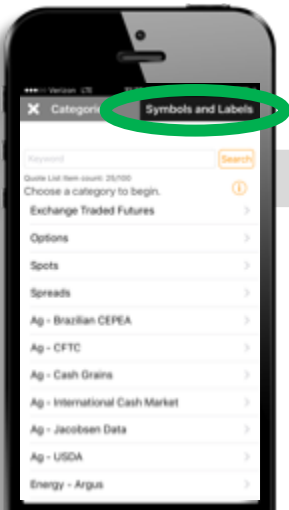
User-Defined Spreads & Entry of Math Expressions

Tracking an intermarket spread real-time on your Quote List is a new feature of the ProphetX iOS mobile app. (Max: 40 symbols)

- Selecting the “+” icon will take you to the “Categories” page. Next to the Categories title, tap “**Symbols and Labels**” where you can enter an intermarket spread.
- Within the search field, you may enter the spread formula and select “**Quick Add**”.

Example #1: 321 Crack Spread for RBOB

$$\left(\left((2 * QRB@1) * 42 \right) + (QHO@1 * 42) \right) - (3 * QCL@1) / 3$$



(((2*QRB@1)*42)+(QHO@1*42))-(3*...
Quote List Item count: 26/100

Added to Quote List

(((2*QRB@1)*42)+(QHO@1*42... 11.7464	
(2 * RBOB GASOLINE March 2017 * 42 + NEW YORK HARBOR ULS...	
O: 11.2430	B: 11.7716
H: 12.0132	A: 11.7868
L: 11.1400	V: --
0.3564 (3.13%)	

G. Quotes

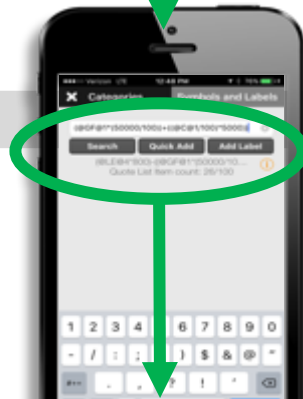
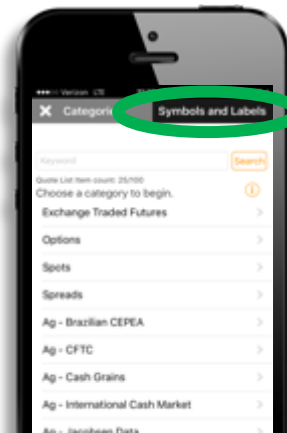
User-Defined Spreads & Entry of Math Expressions

Again, the steps to enter a user-defined spread are as follows...

- Select the “+” icon on the Quote List
- Tap “**Symbols and Labels**”
- *<Enter spread formula>*
- Tap “**Quick Add**”

Example #2: Cattle Crush Formula

$(@LE@4*800)-((@GF@1*(50000/100))+((@C@1/100)*5000))$



$(@LE@4*800)-((@GF@1*(50000/100...)$
Quote List Item count: 26/100

$(@LE@4*800)-((@GF@1*(500...)$ 1052.500
LIVE CATTLE August 2017 * 800 - FEEDER CATTLE March 2017 * ...
O: 1040.000 B:1120.000
H: 1257.500 A:1085.000
L: 527.500 V:--
67.500
(6.52%)

Added to Quote List

G. Quotes

Quote Details & Descriptions



The field labels for the real-time market data associated with an individual symbol is abbreviated as a result of limited space available on the iPhone.

The abbreviations for these field labels are described below:

@WH17				426'0
WHEAT March 2017				
O: 426'2	B: 426'0	S: 426'0	<div style="background-color: #c00; color: white; padding: 5px; text-align: center;"> -0'2 (-0.06%) </div>	
H: 426'6	A: 426'0	D: 01/13		
L: 419'2	V: 72435			

[Symbol]

[Current Price]

[Symbol Title]

O = [Open Price] B = [Bid] S = [Settle]
 H = [High] A = [Ask] D = [Date Settled]
 L = [Low] V = [Volume]

[Price Delta from Open Price]

Price ▲ Price ▼

[%age Delta from Open Price]

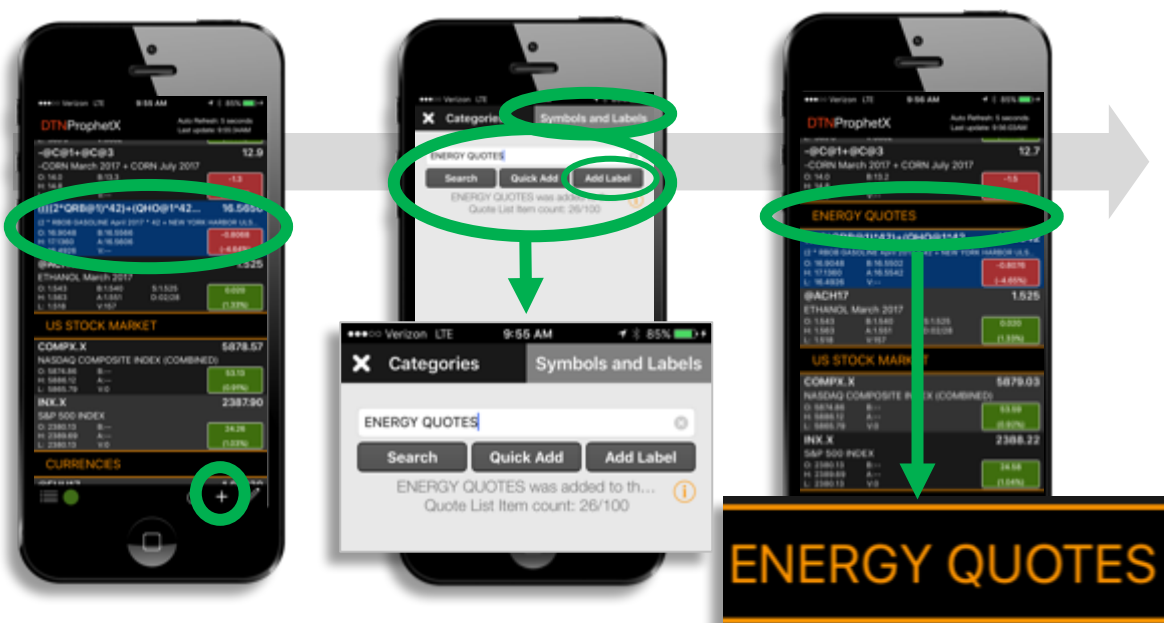
G. Quotes

Creating Labels for Categories

To break your quote list into categories, the ProphetX iOS app allows you to create labels such as the following:

ENERGY QUOTES

- You may add a label in your quote list by first selecting an individual quote in your quote list. A label can be added **ABOVE** the quote you have selected by accessing the search function using the “+” icon.
- You will be taken to the “Categories” page where you will tap the “**Symbols and Labels**” tab.
- Type in the title of your label in the search field and tap the “**Add Label**” option. You will receive a confirmation that the label was added to your quote list.
- Return to your quote list to view your new label.



G. Charts

Chart Basics

To perform further evaluation and analysis on an individual symbol and quote, the ProphetX iOS app for iPhone now provides users with charts. The chart displayed is based upon the symbol quote or spread selected on your quote list.

Here are some chart basics:

- Charts are available for both quote symbols and spreads
- One symbol or spread can be displayed within a chart
- Charts are displayed in both portrait and landscape layouts
- Bar, Line, and Candlestick are the 3 chart types available
- The time intervals available for charts are the following:

5 min | 30 min | 60 min | Day | Week | Month

Portrait



Landscape



NOTE: Studies are not available in this version of the app. Studies will be deployed in a future version.

G. Charts

Charts Layout



“Back” button, allows you to return to quote list

Symbol description

Real-time pricing data carried over from quote list

Y-axis contains pricing scale as it pertains to the individual symbol selected

X-axis contains the date scale as it pertains to the individual symbol selected

6 different chart intervals available

Icon to change chart type

Disabled “News” tab, user may toggle between charts and news

Enabled “Charts” tab

Icon to access Main Menu

G. Charts

Changing Chart Type

To modify your chart type within the ProphetX iOS app, you may tap the chart type icon in the bottom right-hand corner of your chart page to select from 1 of 3 available chart types. These chart types are **Bar**, **Line**, or **Candlestick**.

NOTE: On the iPad app, this icon is located in the top right corner of charts, within the header.



Bar

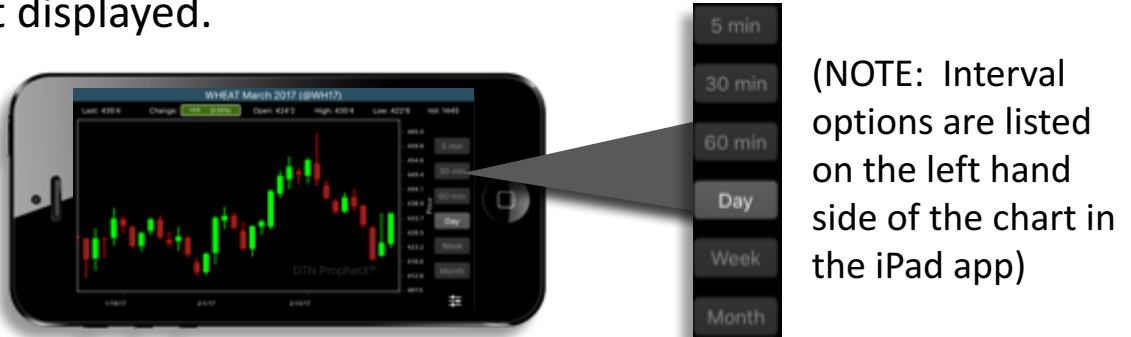
Line

Candlestick

G. Charts

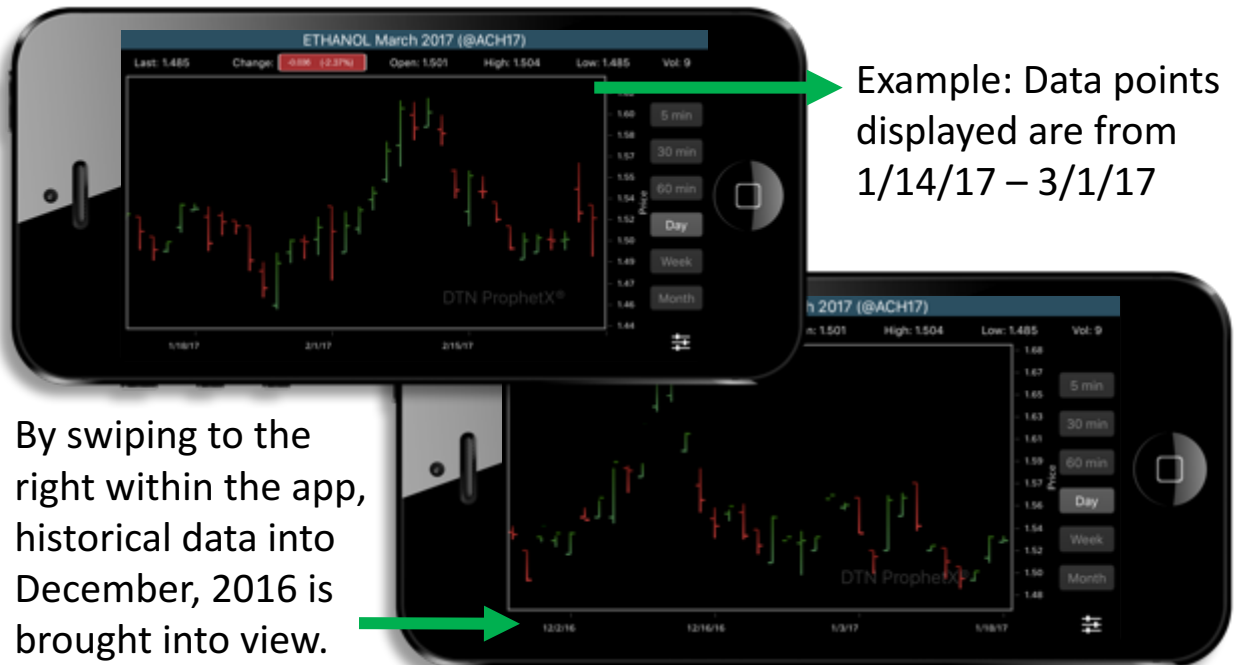
Change Time Intervals

To set or modify the time interval for which your chart displays data, simply tap the desired interval along the right side of the chart displayed.



Viewing Additional Data Points Within a Chart

To view current and historic data horizontally along the chart displayed, you can simply swipe right or left. The pricing scale along the y-axis will auto-adjust based upon the varying pricing levels displayed throughout the entire chart.



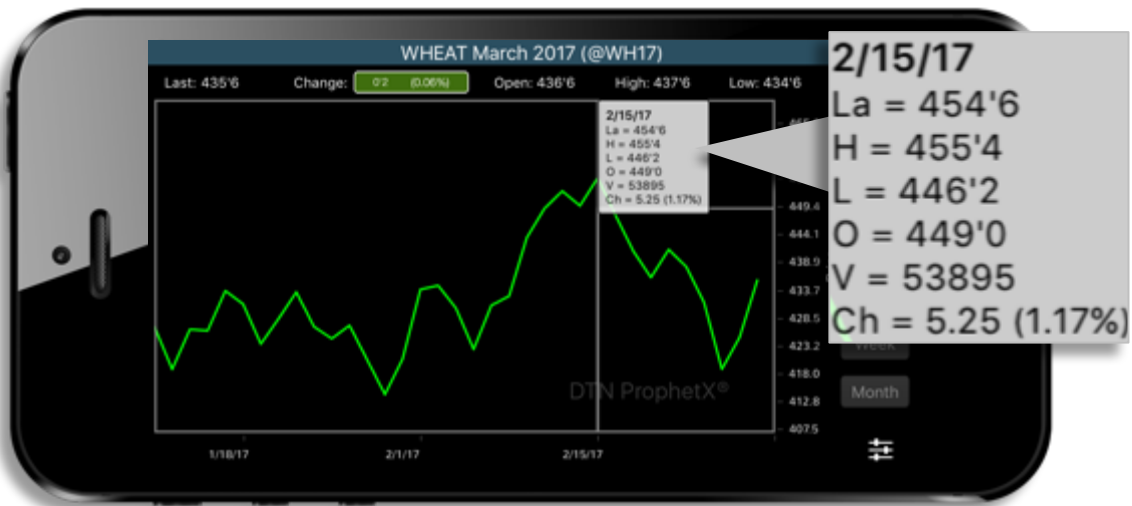
G. Charts

Tooltips

The real-time pricing data displayed within the header of the chart is for the current day. However, you may desire to obtain market pricing information for a symbol or spread at a historic point in time.

You may do so by pulling up “**tooltips**”. Tooltips are small “pop-ups” that display the historic pricing data for for any individual point in time along that symbol or spread’s available history.

- To pull up a tooltip on a chart, simply press down and briefly hold any point along the chart’s data. The tooltip will appear along with crosshairs that will auto-adjust to varying pricing levels across different points in time.
- You may drag your finger left/right along the chart’s data points to view historic data as part of tooltips.
- To remove the tooltip, simply tap the chart one time.

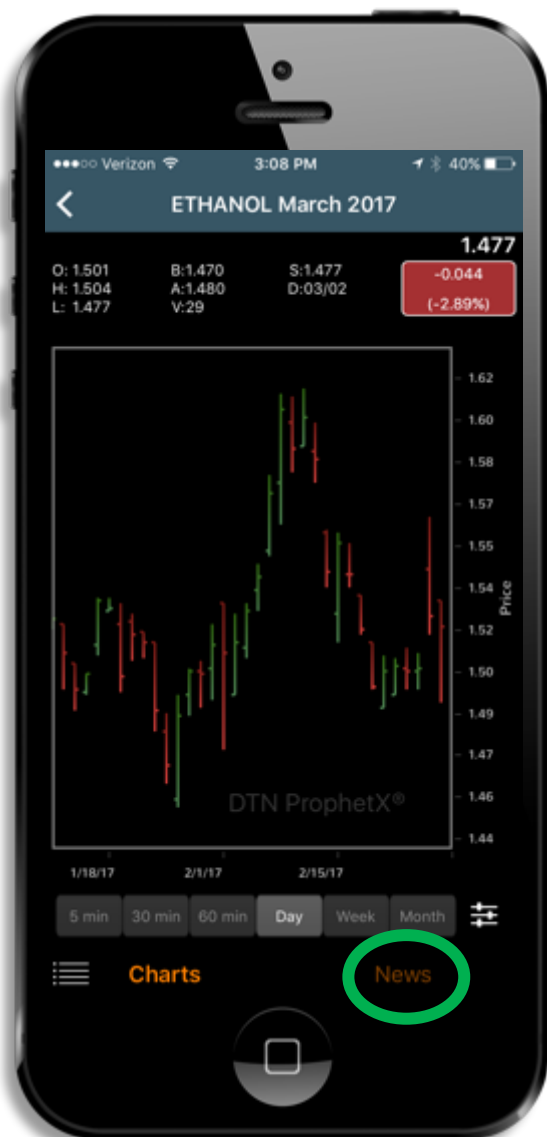


H. News

News Feed

Day-to-day trading decisions are based on price as well as ongoing events and activities taking place within a market, industry, or economy.

Within the ProphetX iOS app, traders are able to stay current with real-time news and events that may influence trading or buying decisions.



- Similar to charts, the default news feed displayed in your app is based upon the symbol or spread selected on your quote list.
- From the charts page, you may tap on the “News” option located in the bottom right corner of the page.
- You may easily toggle back and forth between charts and news for an individual symbol or spread.

H. News

News Feed & News Searches

- Once you have accessed the news page, you will be able to view a real-time feed of news relevant to the symbol or spread you have selected on your quote list.
- Tapping on an individual news line item will display the news content in a pop-up window as shown below.
- The symbol or spread's pricing data will continue to remain in the header while you navigate the news page.



- You may choose to change your news feed and search for a news category or create your own news search. To do so, you may tap the news search icon header to the right of the news search title. The search icon is shown below.



H. News

News Searches | Creating Your News Search

- Selecting the “+” icon within the news searches page directs you to a page to add your own news search based upon key words. You may also assign a title to your search.
- Selecting the “pencil” icon allows you to **remove** news searches from your listing or **reorder** your searches.



H. News (iPad)

News – Expand/Collapse

On the ProphetX iOS iPad app and similar to the quote list, the news component contains an expand/collapse feature that allows you to expand your chart to full screen or collapse it back to its normal size.



Simply tap on the article line item to pull up the article.

I. Customer Service Contact Information

To contact DTN ProphetX Customer Support by phone:

1-800-532-0136

International Callers:

+1-402-255-8628

To contact DTN ProphetX Customer Support by email:

ProphetX@dtn.com

Select “Email ProphetX Support” within the main menu of the iPhone app to contact DTN ProphetX Customer Support directly.

Select “Email ProphetX Support” within the “About” page of the iPad app to contact DTN ProphetX Customer Support directly.

